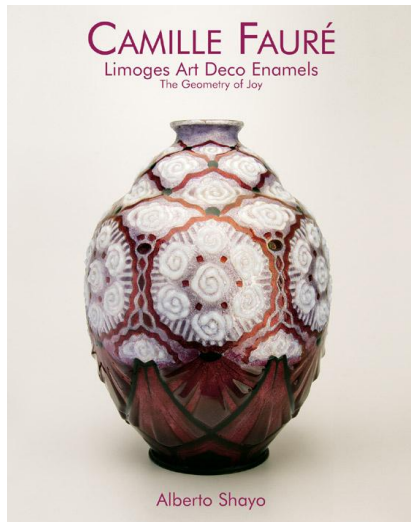


Antique Collectors' Club Ltd.

Sandy Lane, Old Martlesham, Woodbridge, Suffolk, IP12 4SD, UK

Tel: +44 (0) 1394 389950 Fax: +44 (0) 1394 389999 Email: sales@antique-acc.com



Camille Fauré

Limoges Art Deco Enamels - The Geometry of Joy

Alberto Shayo

ISBN13: 9781851495351

ISBN: 1851495355

PUBLISHER: Antique Collectors' Club

TERRITORY: World

SIZE: 279 x 216mm

PAGES: 280

ILLUSTRATIONS: 440 col., 35 b.&w.

PRICE: £49.50 Hardback



- Illustrations of over 200 vases and other objects, including those from never-before-seen private collections
- Insight into Fauré's records, which were kept by the family and artists that worked at his studio

Provides an account of the art of enameling in Limoges, France. This almost dormant art form was taken to new and daring levels of design and execution during the Art Deco period (1920-30). Its most important and prolific studio was that of Camille Fauré.

From painting street signs and billboards, Fauré moved on to enamels of the highest quality, mostly of vases. An avid clientele not only in France, but as far as Japan and Brazil welcomed his geometric and flowerform designs, with vibrant and shining colours.

The studio continued to function until 1985, mostly as a family venture under different modes. Fauré's personal life, art and studio are discussed, as well as illustrations of over 200 vases and other objects taken from museums and never-before-seen private collections worldwide.

